



NAKATSUGAWA TOURISM ASSOCIATION

Nigiwaitokusankan-F1, 1-1, Sakaemachi,
Nakatsugawa-City, Gifu-Pref, 508-0032, Japan
TEL.+81.573.66.5544

【発行】(一社) 中津川観光協会

〒508-0032 岐阜県中津川市栄町 1-1
にぎわいプラザ 1F
TEL:0573-66-5544

URL:<https://nakatsugawa.town>

※For inquiries about restaurants, please contact each restaurant.

※店舗に関するお問い合わせについては、各店舗へご確認ください。

2024年5月発行

2024
N
A
K
A
T
S
U
G
A
W
A

RESTAURANT GUIDEBOOK



Recommended spots in Nakatsugawa-juku

Japanese sweets



Kawakamiya [川上屋]

A long-established Japanese confectionery shop located in Nakatsugawa-juku. Please enjoy the flavors that can only be found in Nakatsugawa, such as Japanese sweets made with chestnuts and seasonal Japanese sweets.

Address 3-1-8 Honmachi, Nakatsugawa-City
TEL 0573-65-2072
Opening hours 8:00~19:30
Closed day Wed
URL HP : <https://www.kawakamiya.co.jp/>

Suya [すや]

This is one of the long-established Japanese confectionery shops that is famous in Nakatsugawa. We produce Japanese sweets with a chestnut flavor.

Address 2-40 Shinmachi, Nakatsugawa-City
TEL 0120-020-780
Opening hours 9:00~19:00
Closed day Wed ※Open every day from September to December
URL HP : <https://www.suya-honke.co.jp/>



Shin [御菓子所しん]

In Nakatsugawa, a town famous for its sweets, we continue to make sweets using special selected ingredients. We are a highly reviewed Japanese confectionery shop in Nakatsugawa.

Address 3-3-9 Otamachi, Nakatsugawa-City
TEL 0573-65-2457
Opening hours 8:30~18:00
Closed day Wed, 3rd Sunday ※Open all Sundays from September to December
URL HP : <https://okashidokoro-shin.com/>



Umezono [梅園]

Since our founding, Umezono has been committed to the spirit of Japanese sweets, protecting the traditions, and working hard every day to create our own original sweets that are rooted in Nakatsugawa. Our signature sweet, "Meoto Guri (Big Chestnut Manju)" made with carefully selected chestnuts, is a favorite with our customers.

Address 2-3-8 Otamachi, Nakatsugawa-City
TEL 0573-65-2543
Opening hours 8:30~19:00 (Every Thursday 9:00~18:00)
Closed day New year's day
URL HP : <https://umezono.shop-pro.jp/>



Syogetsudo [松月堂]

This is a confectionery specialty store with dozens of types of chestnut confectioneries. Founded in 1907. We will continue to maintain the same taste.

Address 2-5-29 Otamachi, Nakatsugawa-City
TEL 0120-08-3008
Opening hours 8:30~18:00
Closed day New year's day (Every Wednesday from January to August)
URL HP : <https://www.syogetsudo.jp/webshop/>



Japanese sake

Hazama Sake Brewery [はざま酒造]

A sake brewery founded in the mid-Edo period. At the attached sake gallery "Shuyukan", old sake brewing tools are on display and you can also enjoy a tour of the sake brewery. We also have a sake tasting corner, so please relax and chat while enjoying the famous sake "Ena-san." You can take a tour and sample for free, so please feel free to stop by.

Address 4-1-51 Honmachi, Nakatsugawa-City
TEL 0573-65-4106 **Opening hours** 10:00~17:00
Closed day New year holiday season
URL <https://enasan.jp/>




Nakasendo-ohga [中山道大鋸]

We carry a wide selection of carefully selected shochu and local sake from all over the country. We will help you choose alcohol by explaining various things about alcohol, brewers, etc. We are doing a tasting comparison of 3 brands of sake for 500 yen.

Address 1-2-9 Honmachi, Nakatsugawa-City
TEL 0573-65-2625 **Opening hours** 9:00~19:00
Closed day Sun, 3rd Monday of the month
URL <https://www.nakasendo-ohga.com/>





NAKATSUGAWA

2024

RESTAURANT GUIDEBOOK

ICON GUIDES



**Free Wi-Fi
available**



**Credit card
payment OK**



**English-speaking
staff available**



**English menu
available**



**Vegetarian dishes
available**

01

Japanese food

Utage Katsusou [宴 勝宗]

A restaurant where you can easily enjoy dishes made with seasonal ingredients.



There are creative dishes that make use of seasonal ingredients as well as standard menus, so please enjoy the sense of the season and the seasonal flavors to your heart's content.



Address 2-2-33 Otacho, Nakatsugawa-City

TEL 0573-65-2008

Opening hours 17:30~L.O21:30

Closed day Irregular holidays



GoogleMAP

02

Japanese food(soba)

Sarashina [更科]

You can enjoy soba noodles made from 100% buckwheat flour and the seasonal taste of Nakatsugawa.



WEBSITE



You can enjoy 100% buckwheat noodles made with homemade buckwheat flour from Nakatsugawa and the seasonal flavors of Nakatsugawa. Wild vegetables, Ayu fish, matsutake mushrooms, wild mushrooms, wild yam, boar meat, and more are popular with everyone.



Address 2-2-31 Otamachi, Nakatsugawa-City

TEL 0573-65-2075

Opening hours 11:30~Closes when
soba runs out

Closed day Irregular holidays

URL <https://sarashina.jimdofree.com>



GoogleMAP

03

Local food

Kiraku [喜楽]

Goheimochi specialty shop since 1943



WEBSITE



Our original roasty Goheimochi sauce is soy sauce based, including walnut, sesame and peanut, and it hasn't changed for 80 years since the opening.



Address 2-1-16 Otamachi, Nakatsugawa-City

TEL 0573-65-0708

Opening hours 10:30~17:00

Closed day Thu

URL <https://kiraku-goheimochi.com>



GoogleMAP

04 Japanese food Heiwa [食事処 平和]

An old restaurant that has been in business for 3 generations



We have set meals such as easy-to-eat rice bowls and Japanese dishes.



Address 2-1-11 Otamachi, Nakatsugawa-City
TEL 0573-65-3073
Opening hours 10:30~14:30 / 17:00~20:00
Closed day Fri

※If sold out, we may close early in the evening.



05 Yakiniku Tenroku [焼肉酒房 天禄]

A homely and comfortable space



About 1 minute walk from Nakatsugawa Station. The restaurant is on the second floor. You can enjoy Kuroge Wagyu beef at a reasonable price.



Address 2nd floor 2-3-26 Otamachi, Nakatsugawa-City
TEL 0573-65-3773
Opening hours 17:00~22:00
Closed day Thu
URL <https://www.yknk-tenroku.com/>



06 Hamburger tocado burger [トコロバーガー]

Hamburgers to enjoy slowly, not fast food



Enjoy handmade ingredients such as 100% beef patties, original egg-free buns from a local bakery, homemade bacon, and pulled pork.



Address 2-3-24 Otamachi, Nakatsugawa-City
TEL 080-6949-1056
Opening hours 11:30~14:00
 18:00~20:30 (L.O.) (Wednesday to Saturday only)
Closed day Mon, Tue



07 Yakiniku Suzuya [寿々屋]

Original tastes only here in Japan! Yakiniku restaurant offering carefully selected Japanese Wagyu beef.



We offer premium cuts of meat at reasonable prices by the skilled master chef. You can fully enjoy the Japanese-style yakiniku. Our highly recommended specialty is the original menu "Gohei offal" found only here in Japan.



Address Aomatsu Bldg. 2-3-5 Otamachi, Nakatsugawa-City
TEL 0573-66-7683
Opening hours 17:00~24:00
Closed day random closing day
URL <https://nakatugawa.info/suzuya>



08 Restaurant Sanyushi [三遊司]

Freshly fried crispy pork cutlet, miso cutlet



Mainly pork loin, freshly fried crispy pork cutlet, homemade miso sauce cutlet, and fried shrimp are popular.

Address 2-4-1 Otamachi, Nakatsugawa-City
TEL 0573-65-2720
Opening hours 11:00~20:00
Closed day Thu



GoogleMAP

10 Izakaya bar Ichifumi [いちふみ]

Enjoy drinks with delicious food in a relaxing atmosphere.



You can enjoy everything from single dishes to course meals using seasonal ingredients in a relaxing atmosphere.

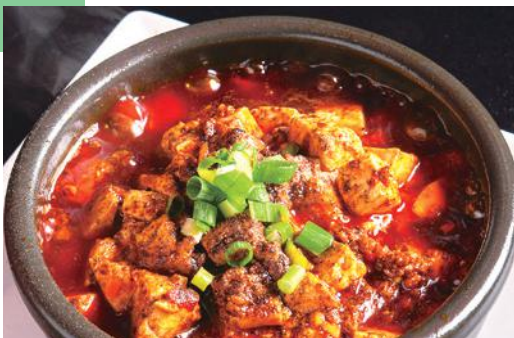
Address 4-21 Sakaemachi, Nakatsugawa-City
TEL 0573-66-7508
Opening hours 17:30~23:00
Closed day Sun and public holidays



GoogleMAP

09 Chinese cuisine Hong Kong Sakaba [香港酒場]

It's addictive. Please be careful.



Restaurant with delicious mapo tofu and xiao long bao. Dumplings and xiao long bao are made after receiving an order. We are proud of our menu, so please enjoy the food, including the atmosphere.



WEBSITE

Address 2-2-3 Otamachi, Nakatsugawa-City
TEL 0573-64-2627
Opening hours 11:30~14:00 / 17:30~23:30
Closed day Irregular holidays



GoogleMAP

11 Yakiniku Tonchanya Sakae [とんちゃんや 栄]

A full belly of happiness



A yakiniku izakaya that feels like a street food stall. Please try our recommended Tonchan (pig's offal) with special miso sauce.



WEBSITE

Address 4-27 Sakaemachi, Nakatsugawa-City
TEL 0573-67-7071
Opening hours 17:00~23:00
 Saturdays, Sundays, and holidays 11:00~
Closed day Wed



GoogleMAP

12

Teppanyaki

Jubei [焼き屋 じゅう兵衛]

Teppanyaki, Yakisoba, Okonomiyaki



We offer piping hot dishes from the iron plate and drinks to the counter seats. You can enjoy seeing teppanyaki in front of you.



Address 4-27 Sakaemachi, Nakatsugawa-City
TEL 0573-66-8951
Opening hours 17:30 ~ 22:30
Closed day Wed



GoogleMAP

13

Izakaya bar

Teishoku Sakaba Asahi [定食酒場 あさひ]

Delicious happiness connected through food



Chicken skin skewers served in a popular restaurant style at a great value. It's open until late, so you can enjoy food and drinks at your leisure. Please feel free to come by.



Address 4-27 Sakaemachi, Nakatsugawa-City
TEL 0573-64-8155
Opening hours Weekdays/Sunday 17:00 ~ 25:30
 Fridays, Saturdays, and before holidays
 17:00 ~ 26:30
Closed day Wed



GoogleMAP

14

Izakaya bar

Hechimaru★Sakaba [へちまる★酒場]

Popular izakaya for Hida beef



WEBSITE



We offer dishes using carefully selected Hida beef, including Hida Beef Doteni (stewed beef tendon)! We also offer reasonably priced drinks: draft beer for 290 yen!



Address 2-14 Sakaemachi, Nakatsugawa-City
TEL 0573-67-8926
Opening hours Monday to Thursday, Sunday 17:00 ~ 24:00
 Fri, Sat 17:00 ~ 25:00



GoogleMAP

15

Izakaya bar

Mikiya [旬味 三喜屋]

Italian lunch is very popular!



WEBSITE



1 minute walk from Nakatsugawa Station. You can eat rice grown in our own farm and dishes using seasonal vegetables. In addition to set meals, the pasta made by the head chef who trained in Italy is very popular.



Address 5-5 Sakaemachi, Nakatsugawa-City
TEL 0573-65-2342
Opening hours 11:30 ~ 13:45 / 17:00 ~ 22:00
Closed day Sun or Mon



GoogleMAP

16 Sushiten [すし天]

Japanese food (Sushi)

Sushi restaurant in a sealess prefecture



We run the restaurant with the support of the local community. We strive to provide you with delicious sushi, sake and food.



GoogleMAP

Address 6-3 Sakaemachi, Nakatsugawa-City
TEL 0573-65-3812
Opening hours Close for lunch. Dinner only.
 Delivery available
Closed day Mon

※The closing time of the restaurant varies from day to day.

17 Marunaka [中華そば まるなか]

Ramen

Very delicious Chinese noodles



The rich flavor of the bonito stock is satisfying to eat and goes well with the special noodles!! Please try it once.



GoogleMAP

Address 2-6-35 Otamachi, Nakatsugawa-City
TEL 0573-64-2250
Opening hours 11:00 ~ 14:00
 17:00 ~ 22:00
Closed day Wed

18 Minami [酒菜みなみ]

Izakaya bar

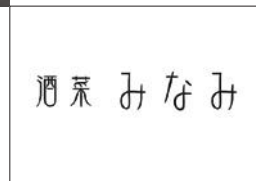
Our top recommendations are miso oden and Taiwanese fried noodles!



We offer a super carbonated highball which meets strict standards and can only be drunk at authorized bars. That highball is available only in Minami in Nakatsugawa.



Address 2-6-7 Otamachi, Nakatsugawa-City
TEL 0573-67-7056
Opening hours 17:30 ~
Closed day Tue



GoogleMAP

19 Unagi restaurant Yamashina [うなぎの山品]

Unagi (freshwater eel) restaurant

Enjoy the best time with the best unagi



Carefully selected domestic unagi. Carefully grilled with a rich secret sauce. It's so delicious that you can't stop eating it with chopsticks.



Address 1-1 Shinmachi, Nakatsugawa-City
TEL 0573-65-2539
Opening hours 11:30 ~ 14:00 / 17:30 ~ 20:30
Closed day Irregular holidays



GoogleMAP

20 Local food Ofukuro [おふくろ]

Goheimochi always hot from the grill with made-on-order style.



WEBSITE



Nakatsugawa's local food "Goheimochi" specialty shop. We grill the Goheimochis after receiving orders. The flavor is soy sauce with sesame, peanut and walnut.



Address 2-4-12 Otamachi, Nakatsugawa-City
TEL 0573-65-5014
Opening hours 11:00~15:00
Closed day Tue, Wed, sometimes temporary closure
URL <https://ofukurogohei.com/products/list.php>



GoogleMAP

21 Japanese food (Unagi) Suehiro [季節料理と鰻の末廣]

Kansai-style Unagi (freshwater eel) restaurant



WEBSITE



The unagis are grilled Kansai-style, crispy on the outside and fluffy on the inside. We recommend the unagi bowl, unagi rice box and Hitsumabushi. We also have Dashimaki egg (Japanese omelet) and Tempura.



Address 2-5-34 Otamachi, Nakatsugawa-City
TEL 0573-65-2633
Opening hours 11:30~14:00 / 17:30~20:30
Closed day irregular holidays

※Depending on the reservation situation, there may be cases that we can't accept customers without reservations.



GoogleMAP

22 Japanese food (Yakitori) Toriyasu [備長炭焼鳥とりやす]

Authentic yakitori specialty store



An authentic yakitori specialty restaurant that grills "Ena chicken", raised in the local Nakatsugawa area, over Kishu Binchotan charcoal.



Address 2-5-31 Otamachi, Nakatsugawa-City
TEL 0573-67-9278
Opening hours 11:30~13:00 (Lunch close when sold out) 17:30~22:30
Closed day Mon, irregular holidays on Sun



GoogleMAP

23 Sports Bar DiningSportsBar88 [ダイニングスポーツバー 88]

DINING&SPORTS BAR near Nakatsugawa Station!!



WEBSITE



The latest darts table DARTSLIVE3 is available only in this bar in the Nakatsugawa area! Drink, play, and watch sports!



Address 2-4-20 Otamachi, Nakatsugawa-City
TEL 0573-67-7583
Opening hours Mon, Wed, Thu, Sun 18:00~26:00
 Fri, Sat 18:00~27:00
Closed day Tue



GoogleMAP

24

Korean izakaya

Korean Izakaya Pocha Pocha [韓国居酒屋ポチャポチャ]

Enjoy authentic Korean street food to your heart's content!



WEBSITE



There are lots of dishes that go well with alcohol, such as everyone's favorite "Samgyeopsal", "Gimbap", and "Chijimi" !



Address 3-4-16 Otamachi, Nakatsugawa-City
TEL 090-9187-2929
Opening hours Wed, Thu, Sun 17:30 ~ 23:00
 Fri, Sat 17:30 ~ 26:00
Closed day Mon, Tue



GoogleMAP

25

Izakaya bar

Monji [囲酒屋 もん爺]

Keichan-yaki, a local dish of Gifu Prefecture



WEBSITE



Grilled pressed squid, a delicacy only available in Nakatsugawa. A la carte dishes such as the most popular addictive chicken and iron plate dishes such as Keichan-yaki are also available.



Address 3-4-13 Otamachi, Nakatsugawa-City
TEL 0573-66-5110
Opening hours 17:00 ~ 24:00
Closed day Thu



GoogleMAP



Free Wi-Fi available



Credit card payment OK



English-speaking staff available



English menu available



Vegetarian dishes available

26

Bar

Ronda

Relax and enjoy Ronda's cocktails and cuisine



Delicious cocktails in a quiet setting. Enjoy a meal prepared by a private chef.

※Seating fee is 1,000yen



Address Nakayama Building 2F 3-24 Yodogawacho, Nakatsugawa-City
TEL 080-2655-9895
Opening hours Tue to Thu, Sun 18:00 ~ 24:00
 Fri, Sat 18:00 ~ 2:00
Closed day Mon, 1st Tue, 3rd Sun



GoogleMAP

27

coffee

RIVERBED COFFEE BREWER&ROASTERY [リバーベッドコーヒーブリューワ&ロースタリー]

A specialty coffee shop where you can spend a blissful time



WEBSITE



A comfortable cafe where you can relax and relieve the fatigue of your travels.

You can spend a blissful time in a homely atmosphere.



Address 2-25 Yodogawacho, Nakatsugawa-City
TEL 080-8880-2760
Opening hours 10:00 ~ 17:00 (L.O 16:30)
Closed day Thu (Open on public holidays)
URL <https://riverbedcoffee-brewer-roastery.com/>



GoogleMAP

28 Yakiniku En [焼肉 縁]

Because the rice is delicious, the meat is delicious!



Fresh meat at a low price!! Orders can be placed slowly on the touch panel. The all-you-can-eat menu with a wide variety of side dishes is very popular!! Please enjoy your fill.



Address 3-8 Yodogawacho, Nakatsugawa-City
TEL 0573-64-8007
Opening hours 11:00~15:00
 17:00~22:00



GoogleMAP

29 Japanese food (Soba) Handmade soba Masa [手打ち蕎麦 匠]

Handmade soba noodle restaurant where you can also enjoy drinking sake.



We have a large selection of local sakes and offer a variety of dishes. You can enjoy soba and also an izakaya-style dinner in the evenings.



Address 1-20 Shinmachi, Nakatsugawa-City
TEL 090-4164-5284
Opening hours 11:00~14:00 / 17:00~22:00
Closed day Mon, sometimes temporary closure



GoogleMAP

※Last order is 30 minutes before closing. Limited quantity

30 Italian KISAKU

Enjoy authentic wood-fired pizza



It is scheduled to relocate and open in early July. An Italian restaurant that focuses on handmade Neapolitan pizzas baked in an authentic wood-fired oven. Please check the homepage for details.



Address 2-29 Shinmachi, Nakatsugawa-City
Opening hours 11:30~14:30 (L.O 14:00)
 17:00~22:00 (L.O 21:30)
Closed day Mon, Thu
URL <https://kisaku2005.com/>



GoogleMAP

31 Sweets meet tree NAKATSUGAWA

"People" and "trees" snuggle up and rest. May meettree be a place of relaxation.



We offer Mont Blanc using chestnuts, a specialty of Nakatsugawa, and sweets using seasonal fruits. Please come to the store where you can feel like you are in the forest.



Address 4-19 Shinmachi, Nakatsugawa-City
TEL 0573-67-7711
Opening hours 10:00~17:00 (L.O 16:00)
Closed day weekdays
 ※Open every day from September to November
URL <https://www.meetree.net/>



GoogleMAP

32 Japanese food Yakeyama [やけ山]

Taste local cuisine in a historic building



WEBSITE



A renovated building that was used as a hideout by Katsura Kogoro, a retainer of the Choshu clan, serves local food such as wild vegetables, mushrooms, wild game, and Hida beef.

After 9pm, it becomes a bar where you can enjoy wine and sake.



Address 4-11 Shinmachi, Nakatsugawa-City

TEL 0573-64-2882

Opening hours Dinner 18:00~ (reservation only)

Bar 21:00~23:30

Closed day Due to the procurement of ingredients, we will be closed irregularly. Please contact us by phone.

URL <https://www.instagram.com/yakeyama.nakatsugawa> (Instagram)



GoogleMAP

33 Ena chicken specialty store Chicken House Nakatsugawa [チキンハウス 中津川店]

Store specializing in "Ena chicken" raised locally



WEBSITE



Meals are served using fresh Ena chicken. Local cuisine "Keichan" and grilled chicken "Toriyaki" are also popular.



Address 5-20 Shinmachi, Nakatsugawa-City

TEL 0573-65-4129

Opening hours 11:00~14:00 / 17:00~22:00

Closed day Wed

URL <https://chicken-h.jp/>



GoogleMAP



Free Wi-Fi available



Credit card payment OK



English-speaking staff available



English menu available



Vegetarian dishes available

34 Yakiniku WAGYU BANK

You can taste various parts of Hida beef



Hida beef is carefully selected from local beef, and you can enjoy a variety of cuts.

Enjoy high-quality Japanese beef with Japanese-style BBQ such as Hida beef sirloin and thick-sliced steak.



Address 8-5 Shinmachi, Nakatsugawa-City

TEL 0573-89-0054

Opening hours Mon to Fri 17:00~23:00

Sat, Sun 15:00~23:00

Closed day Tue



GoogleMAP

35 Western food restaurant Café Tanaka [喫茶たなか]

Local famous 70-year-old café.



WEBSITE



Please enjoy our specialty "meaty minced meat sauce spaghetti" that has been loved for 50 years!



Address 8-13 Shinmachi, Nakatsugawa-City

TEL 0573-65-2814

Opening hours 8:00~14:30(L.O)

Closed day Wed, Thu (Twice a month)

URL <https://www.tanakanomeat.jp>



GoogleMAP

36 Japanese food Airo [笑処あいろ]

Eat, drink and laugh. Obanzai and sake restaurant.



WEBSITE



A restaurant where you can enjoy seasonal ingredients and sake. There are many kinds of obanzai (traditional home cooking) and sake that you can drink and compare. Today's rice balls and miso soup are also available.



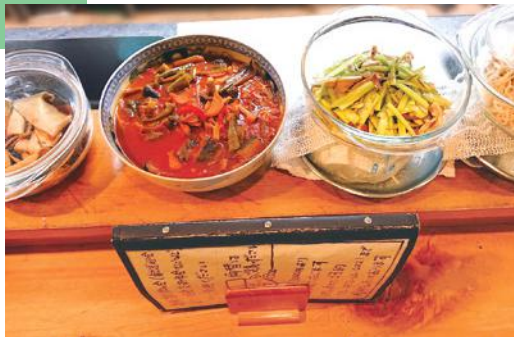
Address 1-12 Honmachi, Nakatsugawa-City
TEL 080-7342-4853
Opening hours 17:00 ~ 23:00
Closed day Sun



GoogleMAP

37 Izakaya bar Hiramatsu [ひらまつ]

Izakaya with a variety of dishes



We offer side and main dishes, noodles and various kinds of dishes featuring local vegetables, fishes and Nakatsugawa's local sakes.



Address 3-17 Honmachi, Nakatsugawa-City
TEL 0573-66-0221
Opening hours 17:00 ~ 23:00
Closed day Wed



GoogleMAP

38 Café holidaypark roastworks [ホリデーパークロストワークス]

Authentic coffee and muffins to enjoy at a cafe renovated from an old folk house



WEBSITE



This cafe is located in Nakatsugawa-juku, Nakasendo, in a renovated 140-year-old private house.

You can enjoy hand-drip coffee made with home-roasted coffee beans, espresso, muffins made with seasonal fruits, and more.



Address 2-6-23 Honmachi, Nakatsugawa-City
TEL 070-4116-1698
Opening hours 9:00 ~ 18:00 (L.O 17:30)
Winter business hours (December to February) 10:00 ~ 17:00 (L.O 16:30)
Closed day Tue, Wed
URL https://www.instagram.com/holidaypark_rw/



GoogleMAP

39 Pizza and Bakery Tiny Pizza (Saisai+Cinnamon)

[タイニーピザ (サイサイ+シナモン)]
New York style tiny pizza stand



WEBSITE



Enjoy our freshly baked NYC-inspired pizzas at our counter or terrace seating. Takeaway options also available. You might get lucky with our occasional homemade bread sales too. Check our Instagram for business hours.



Address 4-2-75 Honmachi, Nakatsugawa-City
TEL 080-6237-1478
Opening hours 12:00 ~ 15:00
Closed day Irregular holidays
(Please check Instagram for business days.)
URL https://www.instagram.com/tiny_saisaicinnamon/



GoogleMAP

40

Japanese food (Sushi)

Sushimasa [寿司政]

Please enjoy sushi and sake in the tatami room.



We offer a sushi set meal which also can be an appetizer for both lunch and dinner time. There are private rooms, so please feel free to visit us.

Address 3-6 Ebisumachi, Nakatsugawa-City
TEL 0573-65-4836
Opening hours 11:30~14:00 / 16:00~22:00
Closed day Mon



GoogleMAP

41

Japanese-Western eclectic

Garando [伽藍堂]

GOODWINE GOODMUSIC GOODLIFE



This is a restaurant where you can enjoy delicious drinks and creative cuisine in a luxurious space. Enjoy your time surrounded by soothing music.



WEBSITE

Address 5-25 Ebisumachi, Nakatsugawa-City
TEL 0573-65-8770
Opening hours 18:00~22:00
Closed day Mon
 Sundays and Tuesdays, irregular holidays
URL <https://goodmusic-garandou.1web.jp/map.html>



GoogleMAP

Nakatsugawa City Tourist Information Center

We provide sightseeing information for Nakatsugawa. Please feel free to drop by.

Nigiwai Specialty Museum

We sell specialty products, including Japanese sweets from Nakatsugawa.



"Kurikinton Soft serve icecream"



¥450

Sales period March to December



Address Nigiwai Plaza 1F 1-1 Sakaemachi, Nakatsugawa-City
TEL TEL 0573-62-2277
Opening hours 8:30~18:00
Closed day December 29th to January 3rd
 3rd Sunday in February
URL <https://nakatsugawa.town/>



WEBSITE

JAPAN TRAVEL INSURANCE TOKIO OMOTENASHI POLICY



WEBSITE

Car rental information

●J-NET Rent a Car NAKATSUGAWA

Address 3-4-5 Otamachi, Nakatsugawa-City
TEL 0573-65-1154



WEBSITE